

30'/02



ELEVATION A **2090** SQ. FT.



ELEVATION B **2110** SQ. FT.

30'/02

ELEV. A **2090** SQ. FT.

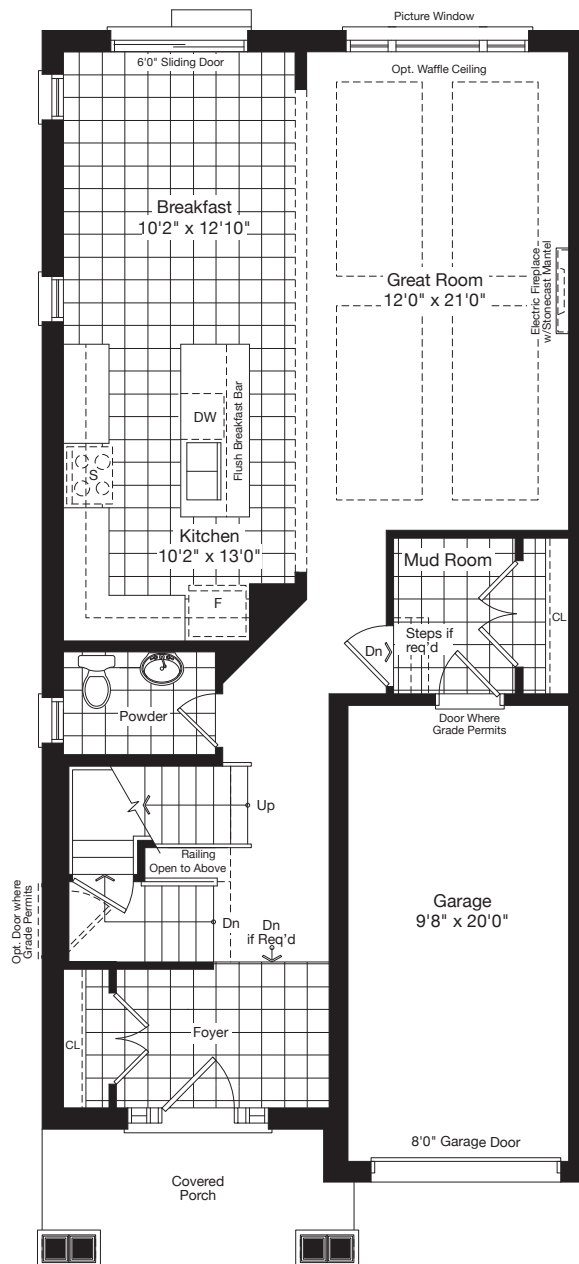
ELEV. B **2110** SQ. FT.



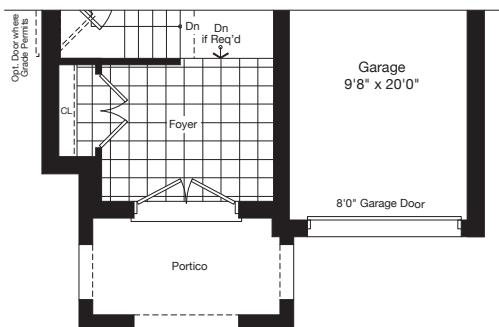
ELEVATION A



ELEVATION B

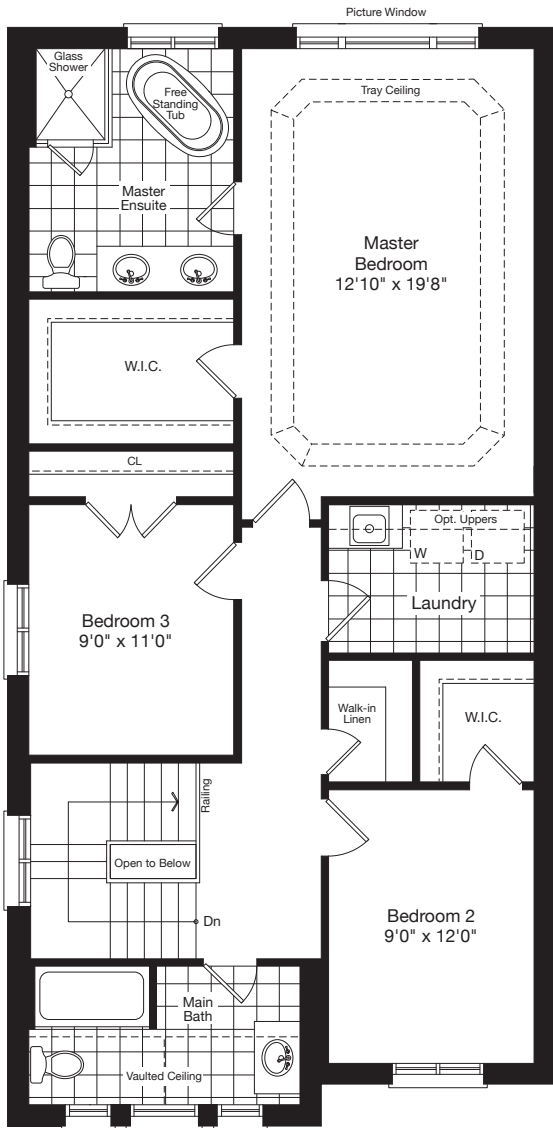


MAIN FLOOR
ELEV. A

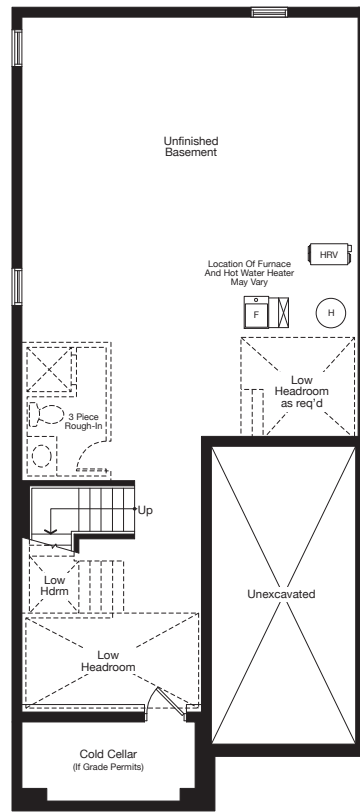


PARTIAL MAIN FLOOR
ELEV. B

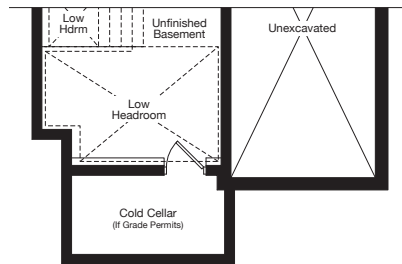
FLOOR PLAN OPTIONS



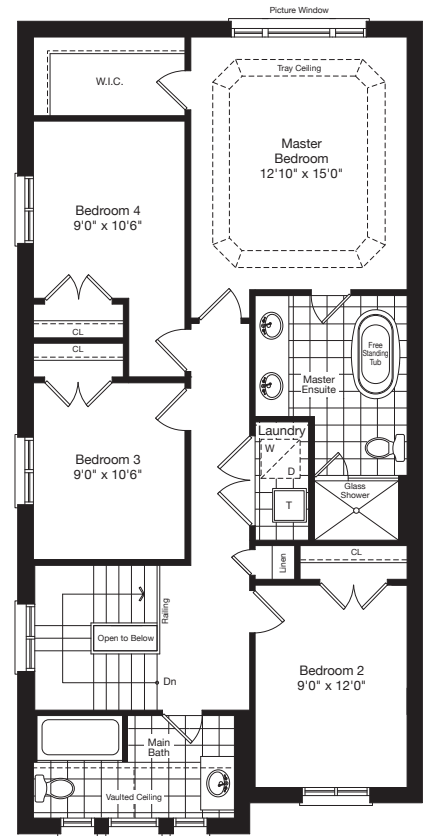
SECOND FLOOR
ELEV. A



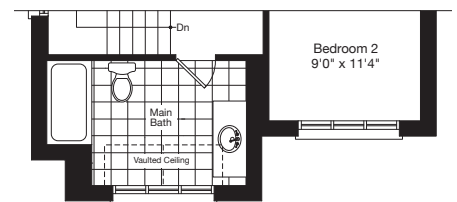
BASEMENT
ELEV. A



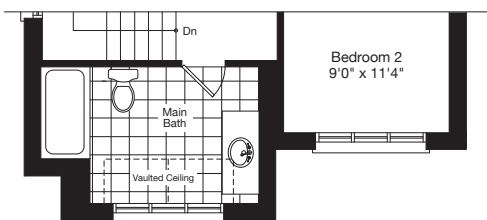
PARTIAL BASEMENT
ELEV. B



OPT. SECOND FLOOR
4 BEDROOM PLAN
ELEV. A



PARTIAL OPT. SECOND FLOOR
4 BEDROOM PLAN
ELEV. B



PARTIAL SECOND FLOOR
ELEV. B

